



1. The Licensee must give Ofcom immediate notice of any change of

2024-Foundation3285

- A maximum transmit power.
- B planning permission.
- C number of transmitters.
- D their name.

2. The Station callsign must be transmitted

2024-Foundation2452

- A when the entry is made in the log book.
- B at the end of each transmission.
- C every half hour and when the Station is closing down.
- D at the beginning of a transmission on a new frequency.

3. Except in national or international emergency, the holder of an Amateur Radio Foundation Licence may NOT send messages that are

2024-Foundation2778

- A in secret code.
- B unrelated to amateur radio.
- C about his/her equipment.
- D of a technical nature.

4. In which of the following are you normally licensed to operate using a Foundation Licence?

2024-Foundation3252

- A Northern Ireland.
- B Sweden.
- C Norway.
- D Finland.

5. For the purposes of the EMF requirements in the amateur licence the description "General Public" means

2024-Foundation7978

- A everybody apart from the licence holder in person.
- B everybody except those living at that amateur's house.
- C people outside the amateur's circle of family and friends.
- D people outside the amateur's family and relatives.



6. You are at your home station talking to an airborne operator on 145.400MHz. What is the maximum permitted power you can use?

2024-Foundation8092

- A 500mW EIRP.
- B 25W.
- C 50W.
- D 100W.

7. A cell is used to store

2019-Foundation1567

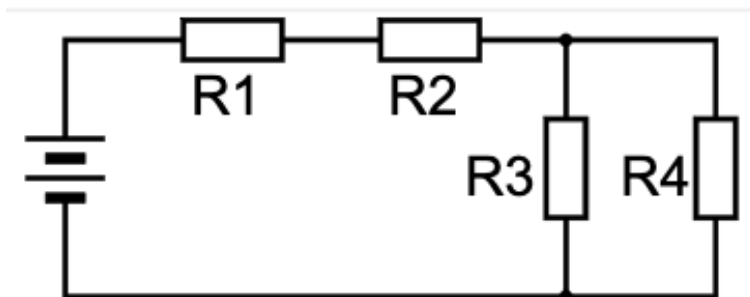
- A current.
- B voltage.
- C resistance.
- D energy.

8. Processing of audio and radio frequency signals by software requires the signal presented to the processor

2019-Foundation7379

- A to be an analogue signal only.
- B to be a digital signal only.
- C can be either analogue or digital.
- D to be continuously variable in level.

9. In the circuit shown the resistors are all of slightly different values. The



2019-Foundation1761

- A current through R1 and R3 will be the same.
- B voltage across R1 and R2 will be the same.
- C current through R3 and R4 will be the same.
- D voltages across R3 and R4 will be the same.



10. Demodulation is the process of

2019-Foundation8038

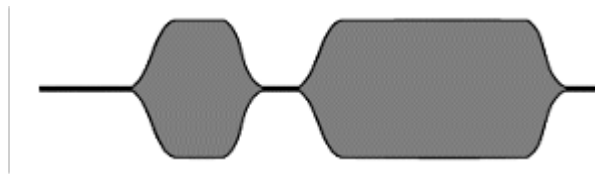
- A removing unwanted radio signals which are nearby in frequency.
- B extracting the information sent by the transmitter.
- C tuning in to the wanted radio signal.
- D ensuring the transmitter and receiver are on the same frequency.

11. Correct adjustment of the microphone gain control is necessary to

2019-Foundation2575

- A avoid the risk of over-modulation or over-deviation.
- B ensure the tone is correct at the receiving station.
- C avoid the risk of damage to the power amplifier stage.
- D minimise the frequency drift of the transmitter.

12. The waveform shown represents the output of



2019-Foundation2887

- A an FM transmitter.
- B a Morse transmitter.
- C an SSB transmitter.
- D a variable frequency oscillator.

13. Which suffix is used to indicate that the antenna is referenced to an ideal antenna which radiates equally in all directions?

2019-Foundation7973

- A PEP.
- B ERP.
- C EIRP.
- D dBd.



Candidate: FOUNDATION, Mock THREE

Exam: Amateur Radio Examination Foundation Level - **Syllabus V1.6**

Centre: RSGB (RSGB – ONLINE REMOTE INV)

Date: Thursday, 01 Aug 2024

14. A balun is

2019-Foundation2913

- A used to prevent RF entering mains cable.
- B used to connect between a balanced antenna and unbalanced feeder.
- C a type of dummy load.
- D a connector.

15. An antenna and low loss feeder show a reasonable VSWR. The antenna is then removed. The VSWR will

2019-Foundation2622

- A reduce.
- B remain unchanged.
- C increase slightly.
- D increase considerably.

16. A difference between HF and VHF or UHF propagation is that

2019-Foundation3077

- A VHF and UHF waves generally travel faster than HF waves.
- B a hill will cause a shadow with HF but not with VHF or UHF.
- C HF radio waves can have a shorter wavelength than some VHF or UHF waves.
- D a hill will cause a shadow with VHF or UHF but not with HF.

17. Radio waves will change direction if

2019-Foundation3236

- A there is a high SWR in the feeder.
- B they are diffracted or reflected.
- C they are not modulated.
- D the antenna is mounted vertically.

18. A neighbour's TV is suffering interference. The first action should be to

2019-Foundation1077

- A discuss the situation with the neighbour and offer help in tracking down the problem.
- B close down the station and return the amateur radio licence.
- C deny all responsibility as the station is not operated during TV hours.
- D request the neighbour to get in touch with Ofcom.



19. Which mode of transmission is the WORST for causing EMC problems?

2019-Foundation2942

- A FM.
- B CW.
- C SSB.
- D Data modes.

20. Which item below is most likely to suffer interference from an amateur transmission?

2019-Foundation3091

- A A battery powered digital clock.
- B A microwave oven.
- C A hair dryer.
- D A radio or television.

21. A Log should record details of the

2024-Foundation8029

- A equipment used to transmit and receive and QSL details.
- B date, time, frequency, or band, mode, callsign of station contacted.
- C times of first and last contacts for that day.
- D names, locations and equipment used by the amateurs you contact.

22. Repeaters are used mainly

2024-Foundation3029

- A so that neighbouring countries can be in-range for fixed stations.
- B enable mobile stations to communicate over greater distances.
- C to give updates on weather and traffic on the motorways.
- D so that emergency users have a priority channel.

23. The best RST report of a Morse signal is

2019-Foundation1928

- A 559.
- B 111.
- C 555.
- D 599.



24. Lithium batteries in particular can

2019-Foundation8014

- A leak a corrosive fluid unless stored upright and out of the sun.
- B can be used with any available charger provided it is the correct voltage.
- C be recharged indefinitely and do not need replacing if properly treated.
- D catch fire or explode if they are not properly used or charged.

25. Using a tool belt when working at heights will

2019-Foundation1984

- A minimise the chance of dropping things.
- B allow two hands to be used to complete the work.
- C avoid the need to wear hard hats.
- D ensure repeated trips up and down the ladder.

26. A transmitting antenna should

2019-Foundation3521

- A not be touched.
- B be vertically polarised.
- C be larger than a receiving antenna for the same band.
- D be of high resistance material.

Candidate: FOUNDATION, Mock THREE  
Exam: Amateur Radio Examination Foundation Level - **Syllabus V1.6**  
Centre: RSGB (RSGB – ONLINE REMOTE INV)  
Date: Thursday, 01 Aug 2024



## Answers FOUNDATION MOCK PAPER 3

| Question | Answer | Question | Answer |
|----------|--------|----------|--------|
| 1        | D      | 14       | B      |
| 2        | D      | 15       | D      |
| 3        | A      | 16       | D      |
| 4        | A      | 17       | B      |
| 5        | A      | 18       | A      |
| 6        | B      | 19       | C      |
| 7        | D      | 20       | D      |
| 8        | B      | 21       | B      |
| 9        | D      | 22       | B      |
| 10       | B      | 23       | D      |
| 11       | A      | 24       | D      |
| 12       | B      | 25       | A      |
| 13       | C      | 26       | A      |